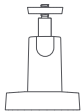


# Xiaomi Outdoor Camera Solar Panel (BW Series) User Manual



**A**

1



2



3



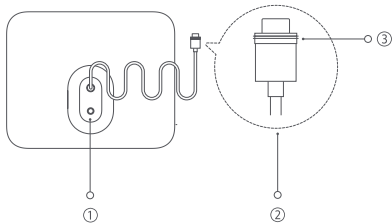
4



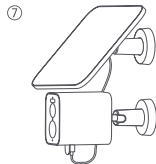
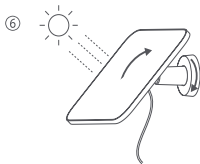
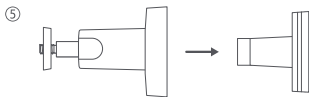
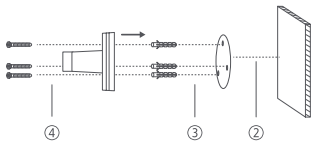
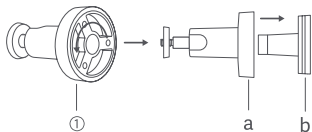
5



6

**B**

C



Read this manual carefully before use, and retain it for future reference.

## Precautions

- The operating temperature range for the solar panel is -20°C to 55°C. Do not use it in environments with temperatures above or below the specified operating range.
- The solar panel is a precision electronic product with an IP66 dust-tight and water-resistant rating. To prevent malfunction, do not use the solar panel in extremely humid environments or locations where water ingress may occur.
- Be sure to install the solar panel in a location with abundant sunlight and free from any obstructions like tree branches, billboards, or buildings that may impact the conversion efficiency of the solar panel.
- To improve the performance of the solar panel, do not place it completely horizontally. Otherwise, dust, soil, or other debris may accumulate on it. Regularly clean the solar panel.
- Stop using the solar panel immediately if you notice any loose wiring or exposed electronics.

- Do not strike, crush, step on, bend, dismantle, or scratch the solar panel with sharp objects.
- Do not use or store the solar panel in flammable or explosive areas, nor throw it into a fire.

Note: Illustrations of product, accessories, and user interface in the user manual are for reference purposes only. Actual product and functions may vary due to product enhancements.

## Product Overview

### Package Contents

Illustration A

- |                  |              |                              |
|------------------|--------------|------------------------------|
| 1. Solar Panel   | 2. Mount     | 3. Mounting Template Sticker |
| 4. Wall Plug × 4 | 5. Screw × 4 | 6. User Manual               |

### Parts Name

Illustration B

- |                               |                             |
|-------------------------------|-----------------------------|
| ① Installation Hole for Mount | ② Type-C Charging Connector |
| ③ Waterproof Gasket           |                             |

## How to Install

### Illustration C

- Rotate counterclockwise to disassemble the mount.
  - a. Locking Cap
  - b. Base
- Select a suitable mounting position (where no buildings or trees obstruct the mounting wall), and then place the mounting template sticker on a flat wall surface.
- Drill holes (each hole has a diameter of 6 mm and a depth of 30 mm) and install wall plugs.
- Fix the base to the wall with screws.
- Fix the locking cap onto the base.
- Attach the solar panel to the mount and adjust its angle to maximize the direct sunlight exposure. Then tighten the locking cap.
- Completely insert the charging connector and waterproof gasket into the Type-C power port of the camera.

Note: This product is compatible with some models of the BW series of Xiaomi outdoor cameras.

## Specifications

Model: MJSXJ10BY

Maximum Output Power: 5 W

Open-circuit Voltage: 6.8 V

IP Rating: IP66

Cable Length: 3 m ± 0.1 m

## WEEE Information



All products bearing this symbol are waste electrical and electronic equipment (WEEE as in directive 2012/19/EU) which should not be mixed with unsorted household waste.

Instead, you should protect human health and the environment by handing over your waste equipment to a designated collection point for the recycling of waste electrical and electronic equipment, appointed by the government or local authorities. Correct disposal and recycling will help prevent potential negative consequences to the environment and human health. Please contact the installer or local authorities for more information about the location as well as terms and conditions of such collection points.

## Warranty Notice

As a Xiaomi consumer, you benefit under certain conditions from additional warranties. Xiaomi offers specific consumer warranty benefits which are in addition to, and not instead of, any legal warranties provided by your national consumer law. The duration and conditions related to the legal warranties are provided by respective local laws. For more information about the consumer warranty benefits, please refer to Xiaomi's official website <https://www.mi.com/global/support/warranty/>. Except as prohibited by laws or otherwise promised by Xiaomi, the after-sales services shall be limited to the country or region of the original purchase. Under the consumer warranty, to the fullest extent permitted by law, Xiaomi will, at its discretion, repair, replace or refund your product. Normal wear and tear, force majeure, abuse or damage caused by the user's negligence or fault are not warranted. The contact person for the after-sale service may be any person in Xiaomi's authorized service network, Xiaomi's authorized distributors or the final vendor who sold the products to you. If in doubt please contact the relevant person as Xiaomi may identify.

The present warranties do not apply in Hong Kong and Taiwan.  
Products which were not duly imported and/or were not duly

manufactured by Xiaomi and/or were not duly acquired from Xiaomi or a Xiaomi's official seller are not covered by the present warranties. As per applicable law you may benefit from warranties from the non-official retailer who sold the product. Therefore, Xiaomi invites you to contact the retailer from whom you purchased the product.

Manufactured for: Xiaomi Communications Co., Ltd.  
Manufactured by: 70mai Co., Ltd.  
(a Mi Ecosystem company)

Address: Room 2220, Building 2, No. 588 Zixing Road, Minhang District, Shanghai, China

For further information, please go to [www.mi.com](http://www.mi.com)  
User Manual Version: V1.0

Manufacturer or his authorized representative:  
Name: Xiaomi Technology Netherlands B.V  
Address: Prinses Beatrixlaan 582, 2595BM, The Hague, The Netherlands  
Country: Netherlands



Importer:  
Beryko s.r.o.  
Pod Vinicemi 931/2, 301 00 Plzeň  
[www.beryko.cz](http://www.beryko.cz)



7011AA800249

